



## SmartFire 11/15

COMPACT  
VERSION



**Nominal output 11 or 15 kW.**

Pellet boiler with automatic cleaning of the burner. The boiler has a safety rotary valve, power modulation, automatic ignition and weather regulation with sim touch panel. It can be equipped with automatic cleaning of the heat exchanger, extra pellet hopper on the top, extra feeder from a larger pellet store, automatic ash removal, touch panel, lambda probe and internet connection. 50 litre store as standard, alternate options available

	£4390.00
	£4589.00

**fuel:** wood pellets

\* extra charge

### Extra equipment:

model	price
fuel tank extension 90 L on the top	£122.00
fuel tank extension 163 L on the top	£155.00
Touch panel	£203.00
Lambda probe	£306.00
Hydraulic equipment with thermostatic valve and energy saving pump	£285.00
Automatic cleaning of the heat exchanger	£269.00
Expansion module	£203.00
Internet module ecoNet 300	£173.00
Remote (room) control with room sensor EcoSTer touch	£159.00
Automatic ash removal	£523.00
3 bar version	£214.00

All prices are subject to V.A.T at the current rate



## SmartFire 11

PELLET HOPPER  
ON THE TOP



**Nominal output 11 kW.**

Pellet boiler with automatic cleaning of the heat exchanger and burner. The boiler has a safety rotary valve, power modulation, automatic ignition and weather regulation with touch panel. It can be equipped with extra feeder from a larger pellet store, automatic ash removal, lambda probe and internet connection. 130 litre pellet store

model	
SF 11/130	£4549.00

**fuel:** wood pellets

\* extra charge

### Extra equipment:

model	price
Lambda probe	£306.00
Hydraulic equipment with thermostatic valve and energy saving pump	£306.00
Automatic cleaning of the heat exchanger	standard
Expansion module	£203.00
Internet module ecoNet 300	£175.00
Remote (room) control with room sensor EcoSTer touch	£159.00
Automatic ash removal	£523.00
3 bar version	£214.00

All prices are subject to V.A.T at the current rate



## SmartFire 11/15/22/31/41

PELLET HOPPER  
ON THE SIDE



**Nominal output 11,15,22,31 or 41 kW.**

Pellet boiler with automatic cleaning of the burner. The boiler has a safety rotary valve, power modulation, automatic ignition and weather regulation with touch panel. It can be equipped with automatic cleaning of the heat exchanger, extra feeder from a bigger pellet tank, automatic ash removal, lambda probe and internet connection 150 / 240 / 400 litre pellet store option.

model	price
SF 11/150	£4887.00
SF 11/240	£5086.00
SF 11/400	£5185.00

model	price
	£4937.00
	£5135.00
	£5235.00

model	price
	£5135.00
	£5334.00
	£5433.00

model	price
	£5979.00
	£6029.00
	£6079.00

model	price
	£6029.00
	£6079.00
	£6128.00

**fuel:** wood pellets

\* extra charge

### Extra equipment:

model	price
Lambda probe	£306.00
Hydraulic equipment with thermostatic valve and energy saving pump	£285.00
Automatic cleaning of the heat exchanger	£269.00
Expansion module	£203.00
Internet module ecoNet 300	£173.00
Remote (room) control with room sensor EcoSTer touch	£159.00
Automatic ash removal	£523.00
3 bar version SF11/15/22	£214.00
3 bar version SF31/41	£637.00

All prices are subject to V.A.T at the current rate



## InterFire 11

PELLET HOPPER  
ON THE SIDE



**Nominal output 11 kW.**

Condensing pellet boiler with automatic cleaning of the heat exchanger and burner. The boiler has a safety rotary valve, power modulation, automatic ignition and weather regulation with touch panel and lambda probe. It can be equipped with an extra feeder from a larger pellet store, automatic ash removal and internet connection 150 / 240 / 400 litre pellet store option.

model	
	£7469.00
	£7668.00
	£7767.00

**fuel:** wood pellets

\* 10 kW - standard mode / 12 kW - condensation mode

### Extra equipment:

model	price
Lambda probe	standard
Hydraulic equipment with thermostatic valve and energy saving pump	not required
Automatic cleaning of the heat exchanger	standard
Expansion module	£203.00
Internet module ecoNet 300	£173.00
Remote (room) control with room sensor EcoSTer touch	£159.00
Automatic ash removal	£523.00

All prices are subject to V.A.T at the current rate





## SmartFire 69/81

PELLET HOPPER  
ON THE SIDE



**Nominal output 69 or 81 kW.**

Pellet boiler with automatic cleaning of the heat exchanger and burner. The boiler has a safety rotary valve, power modulation, automatic ignition and weather regulation with touch panel. It can be equipped with an extra feeder from a larger pellet store, automatic ash removal, lambda probe and internet connection.

model	
	£11045.00
	£11443.00

**fuel:** wood pellets

\* extra charge

### Extra equipment:

model	price
Lambda probe	£306.00
Hydraulic equipment with thermostatic valve and energy saving pump	£360.00
Automatic cleaning of the heat exchanger	standard
Expansion module	£203.00
Internet module ecoNet 300	£173.00
Remote (room) control with room sensor EcoSTer touch	£159.00
Automatic ash removal	£1179.00
3 bar version	£830.00



## PelletFocus 21

PELLET HOPPER  
ON THE TOP



**Nominal output 18 kW.**

*Pellet boiler with automatic cleaning of the burner. The boiler has power modulation, automatic ignition and weather regulation with sim touch panel. It can be equipped with automatic cleaning of the heat exchanger, extra pellet hopper on the top, extra feeder from a larger pellet store, touch panel, lambda probe and Internet connection.*

model	
PF 21	£4072.00

**fuel:** wood pellets

\* extra charge

### Extra equipment:

model	price
Touch panel	£306.00
Lambda probe	£306.00
Hydraulic equipment with thermostatic valve and energy saving pump	£285.00
Automatic cleaning of the heat exchanger	£269.00
Expansion module	£203.00
Internet module ecoNet 300	£203.00
Remote (room) control with room sensor EcoSTer touch	£159.00
3 bar version	£312.00

All prices are subject to V.A.T at the current rate



## HolzMaster 20

**Nominal output 20 kW.**

HolzMaster is a wood gasifying boiler with a fully ceramic furnace, stainless steel plates in the loading chamber, regulator with a PID algorithm and a flue gas sensor and weather regulation. The HolzMaster boiler has a large loading chamber for up to 50-cm long logs of wood.



model	
HM 20	£3943.00

**fuel:** seasoned wood

\* extra charge

### Extra equipment:

model	price
Hydraulic equipment with thermostatic valve and energy saving pump	£285.00
Expansion module	£203.00
Internet module ecoNet 300	£203.00
Remote (room) control with room sensor EcoSTer touch	£159.00
3 bar version	£994.00

All prices are subject to V.A.T at the current rate

## Pellet transport and storage systems



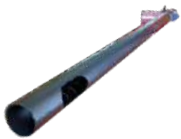
*Screw auger for self-assembly equipped with a suction probe for use with a pneumatic transport system (VACUUM).*

length	price
2 m	£1045.00
3 m	£1132.00



*Pellet auger with a flexible element and mass sensor.*

length	price
4 m	£861.00
5 m	£915.00



*Pellet auger with mass sensor.*

length	price
2.5 m	£536.00
3 m	£644.00



**VACUUM**

price
£965.00



*Suction probe*

price
£138.00



*Distributor for suction probes*

model	price
3 sections	£193.00
5 sections	£198.00



*Transport hose DN50 / 10m*

price
£175.00

All prices are subject to V.A.T at the current rate





**Metal folding pellet store**

capacity	price
300 L	£349.00
500 L	£393.00
900 L	£620.00
1480 L	£696.00

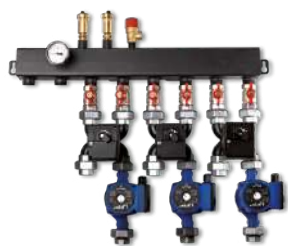
## Spare parts and equipment



**Hydraulic kit with thermostatic valve and energy saving pump**

standard: SF11, SF12

model	price
11-41 kW	£285.00
69-81 kW	£360.00



**Hydraulic kit for one, two or three heating circuits**

model	price
1 cir	£501.00
2 cir	£675.00
3 cir	£864.00



**4-way mixing valve**

1' = 25; 1 ¼' = 32; 1 ½' = 40; 2' = 50

model	price
25	£85.00
32	£87.00
40	£99.00
50	£125.00



**Motor for mixing valve**

230 VAC, 5 Nm, 140 sec

price
£246.00

All prices are subject to V.A.T at the current rate



### Thermostatic valve TV

1' = 25; 1 ¼' = 32; 1 ½' = 40; 2' = 50

model	price
25	£100.00
32	£105.00
40	£133.00
50	£142.00



### EcoSTER touch – remote (room) control with room sensor

price
£159.00



### EcoSTER 200 – remote (room) control with room sensor

price
£110.00



### Regulator (complete) 700P/810P/800D/810P-TOUCH (panel, modules A and B)

price
£510.00



### Regulator (complete) 810P for boiler PelletFocus (panel, module A)

price
£327.00



### Regulator (complete) 860P-simTOUCH (panel, module)

price
£284.00



### Expansion module

price
£154.00

### Sensors for 700P/800P/800D/810P

price
£56.00

All prices are subject to V.A.T at the current rate

*Outdoor sensor for 700P/800P/800D/810P*

price

£58.00

*Flue gas temperature sensor for 700P/800P/800D/810P*

price

£75.00

*Safety valve 1.5 bar*

price

£30.00

*Outlet fan for PF21*

price

£143.00

*Chimney fan for SF 11-12*

price

£164.00

*Chimney fan for SF15-41, HM 20*

price

£240.00

*Chimney fan for SF 69/80*

price

£316.00

*Motor for cleaning system for SF*

price

£289.00

*Motor for feeding system*

model	price
SF11-22 PF21	£246.00
SF41	£256.00
SF69-81	£246.00

*Servo motor BELIMO for burner cleaning*

model	price
SF11-41 PF20	£148.00
SF69-81	£154.00

All prices are subject to V.A.T at the current rate

**Cast iron rotary valve for SF**

price

£175.00

**Burner SF**

model	price
SF11	£105.00
SF12	£105.00
SF15	£105.00
SF22	£108.00
SF41	£119.00
SF69	£246.00
SF80	£246.00

**Burner HM 20**

price

£262.00

**Pellet igniter for SF11-41 PF21**

model	price
SF11-22, PF	£148.00
SF41	£197.00

**STB (Safety thermostat)**

price

£64.00

**Screw auger for SF**

model	price
SF11	£61.00
SF/150	£61.00
SF/240	£71.00
SF/470	£83.00
SF41	£83.00
SF80	£83.00

All prices are subject to V.A.T at the current rate